



# Energy storage battery box

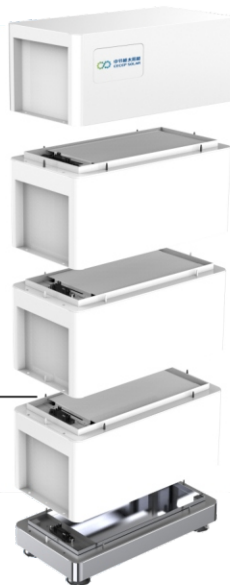
"safety is all we pursue"

## Safest and long life-span

Edge-cutting battery management technology , service online even after 6000 cycles.

## Flexible combination

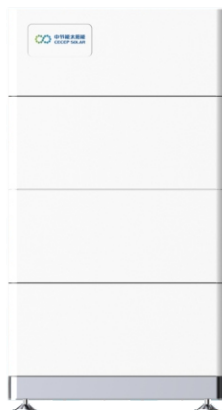
Based on your real house power consumption, choose the most efficient capacities.



## Modular Design

The maximum weight is less than 23kg per module, so it takes only one person to assemble.

## Technical Specifications



### Battery type

Li-Ion

### Working temperature

14°F to 131°F /-10°C to 55°C

### Nominal Voltage

51.2V/Module

### Max. charge current

1C

### Capacity

40Ah/Module

### Max. discharge current

Continuous at 1C

### Stored energy

2.048kWh/module

### Warranty

10 years

### Up to 12.3kWh

### Certification

IEC62619 IEC62040 UN38.3



## Energy storage battery box 储能电池箱

Models 型号	CECBX-LI4.1	CECBX-LI6.2	CECBX-LI8.2	CECBX-LI10.3	CECBX-LI12.3
Cell Type 电池类型	LiFePO4				
Normal parameter 常规参数					
Total Energy(kWh) 总电量	4.10 (2 battery modules)	6.15 (3 battery modules)	8.20 (4 battery modules)	10.25 (5 battery modules)	12.25 (6 battery modules)
Capacity(Ah) 容量	40				
Nominal Voltage(V) 额定电压	102.4	153.6	204.8	256	307.2
Voltage Range(V) 电压范围	80~113.6	120~170.4	160~227.2	200~284	240~340.8
Dimension(W×D×H)mm 尺寸(长宽高)毫米	500×258×683	500×258×898	500×258×1113	500×258×1328	500×258×1543
Weight(kg) 重量	58	81	104	127	150
Nominal Charge/Discharge Current(A) 额定充放电电流	20				
Max. Charge/Discharge Current(A) 最大充放电电流	40				
Expected Lifetime 寿命	10 Years				
Charge Temperature Range(°C) 充电工作温度	0~+45 (0°C~15°C Will be derating)				
Discharge Temperature Range(°C) 放电工作温度	-10~+55				
Communication 通讯	RS485/CAN				
Enclosure Protection Rating 防护等级	IP55				
Certification 认证					
Cell 电芯	IEC62619				
Product 产品	IEC62619 IEC 62040 UN38.3				